

Maori Keyboard Installation

Download and double click the zip file,



Double click the executable file



After a few seconds you will get installation complete

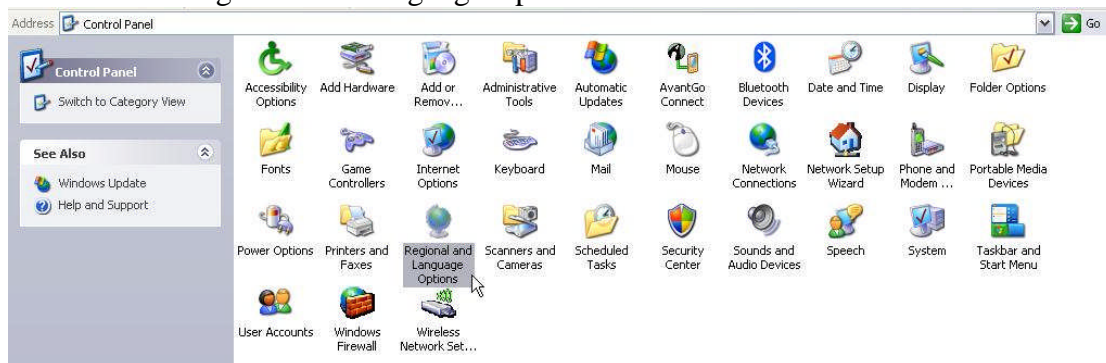


Now you need to add the keyboard go to

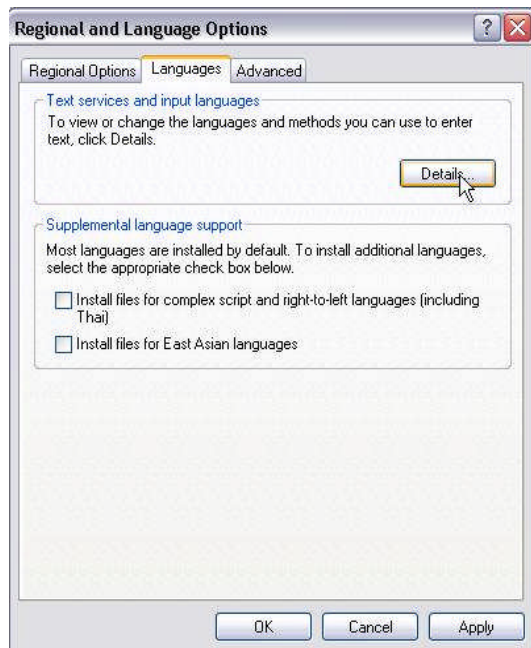


Control Panel 

Double click Regional and Language Options



Select Languages Tab – click Details



Click add



Tick Keyboard layout/IME scroll and select New Zealand – Maori (Te Taura Whiri)
Click ok



In the Default input language scroll and select
English (New Zealand) - New Zealand – Maori (Te Taura Whiri)
Click ok



Open a word document

Press left bracket (next to the letter p} nothing should happen until you press a vowel
āēīōū

Capitals work the same press left bracket and then shift or caps lock and then the
vowel.